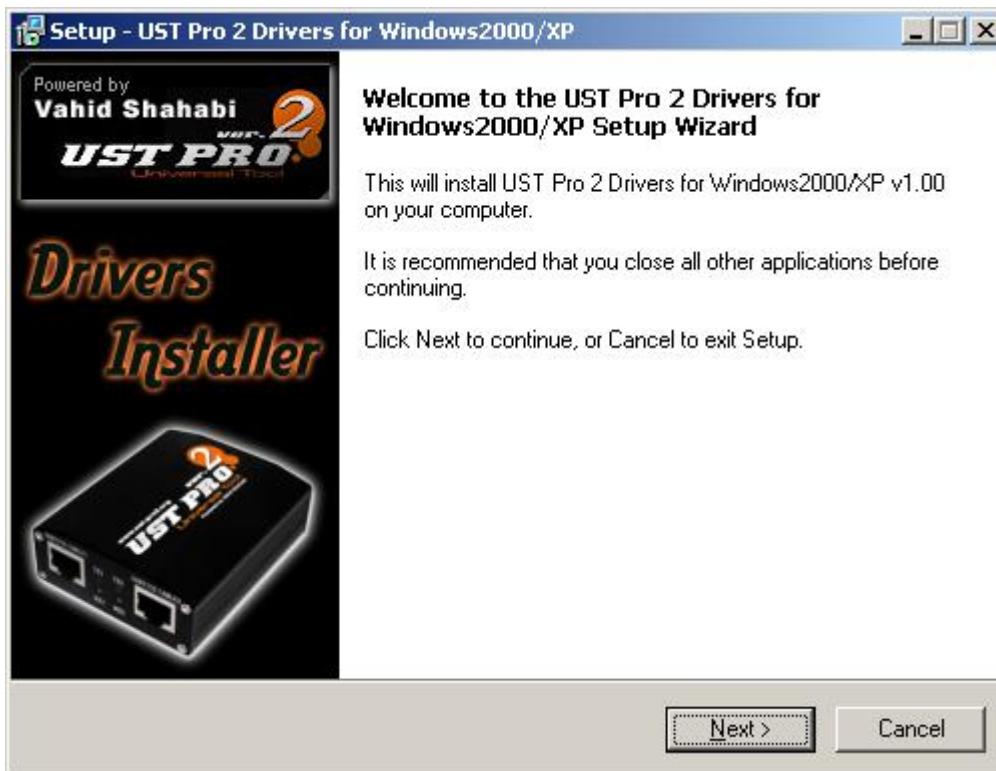


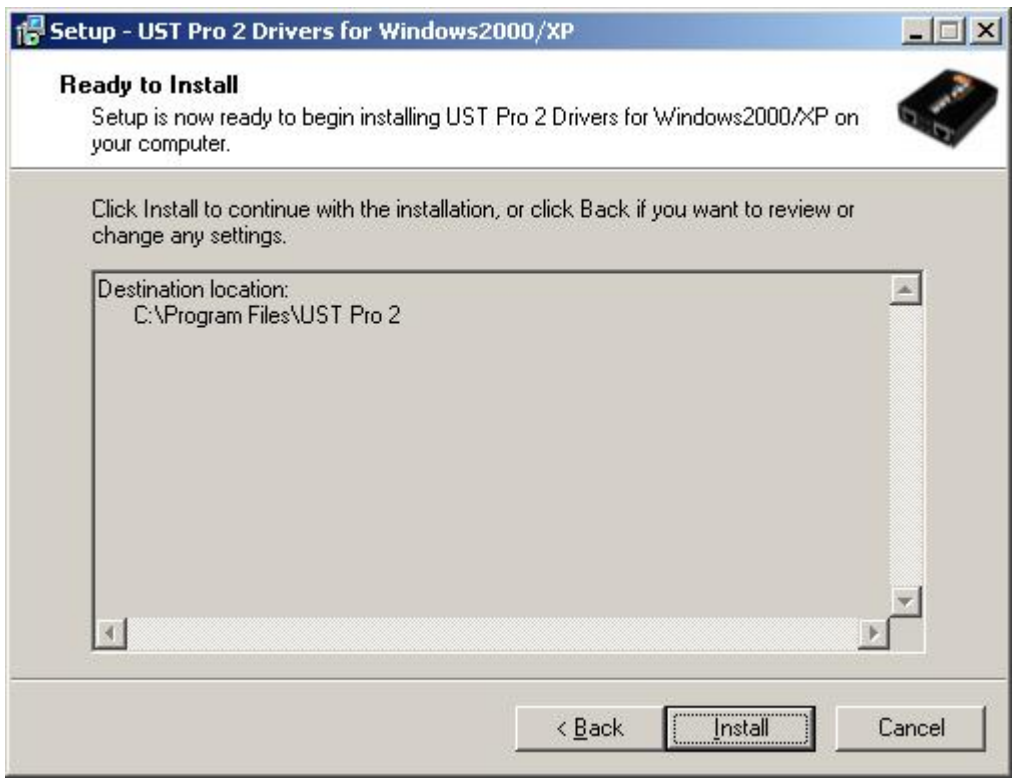
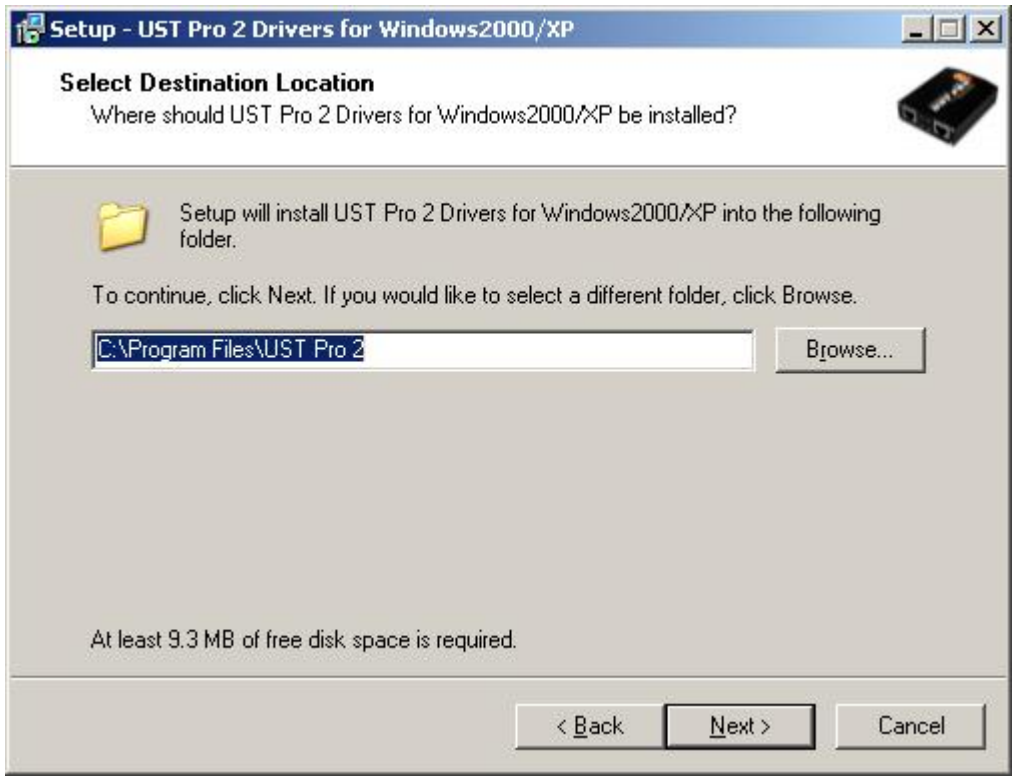
!!! UST Pro II Box Installation !!!

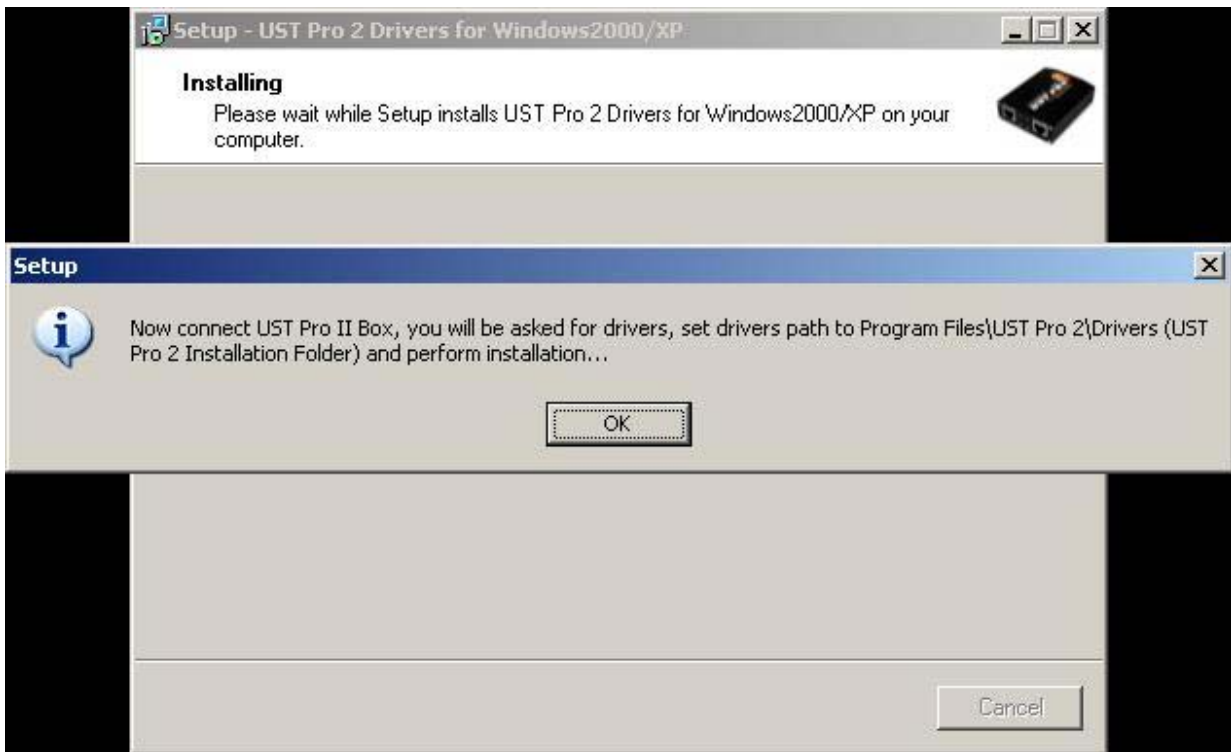
Notes :

- DO NOT connect box to PC before installing drivers.
- If you have another schlumberger smartcard based hardware (Fighter/Cruiser,Infinity,Thunderstorm,etc...) connected to your USB port, disconnect it from USB port before / while installing UST Pro II device drivers.

STEP(1) : Install drivers setup (as shown in pictures)

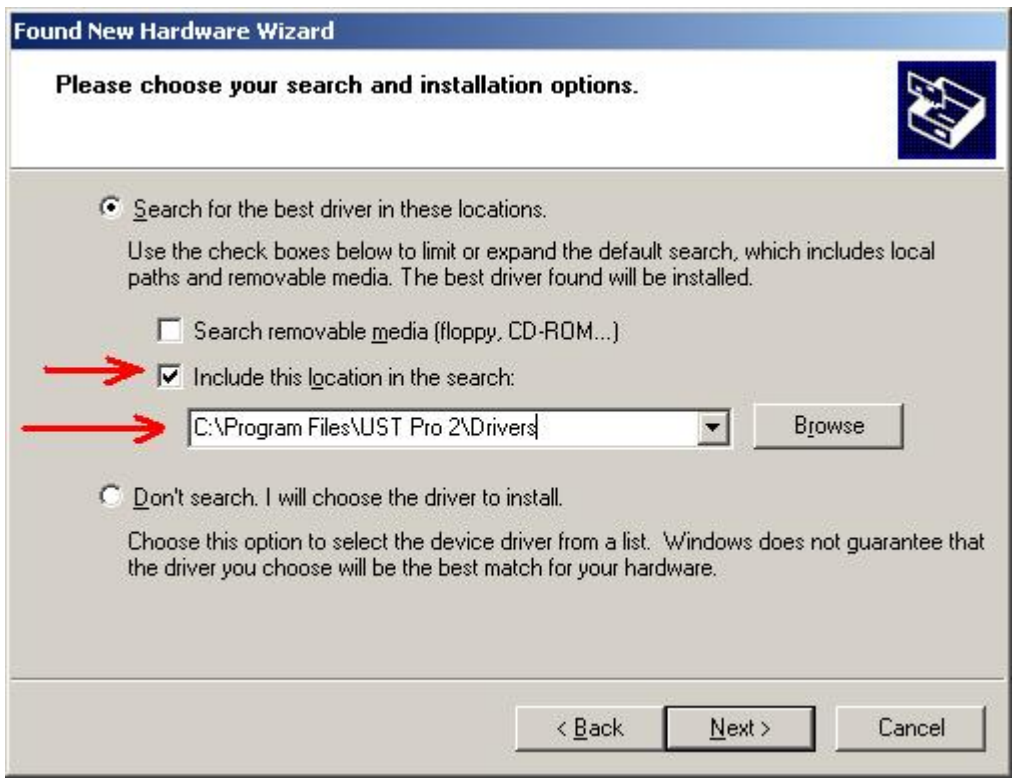
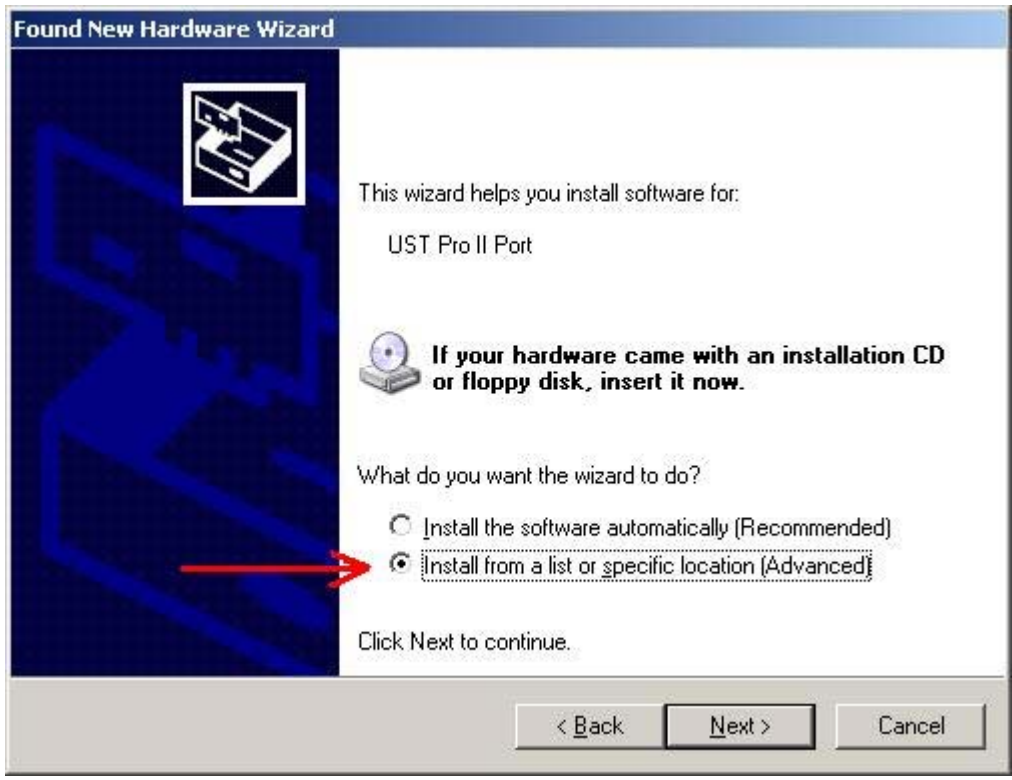






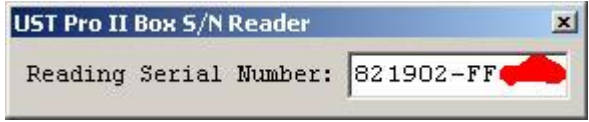
STEP(2) : Connect Box to USB port and start installing drivers from {Program Files}\UST Pro 2\Drivers







STEP(3) : Now run SN Reader from desktop (Created after setup) and get your box SN, and perform registration in support website.



- www.ust-pro2.org
- sales@ust-pro2.org
- support@ust-pro2.org
- info@vsh-gsm.com

-How To Activate Account For Support Site-

For support area kindly Activate your box account at <http://www.ust-pro2.org/support.php> by using SN Reader.exe to read your box serial.

- 1.Connect your box to your pc
- 2.Install the box driver
- 3.Run UST PRO 2 SN Reader.exe
- 4.After you run the serial reader copy ur box serial numberYour Box Serial Is Your Activation Code
- 5.Go to <http://www.ust-pro2.org/support.php> and paste at the activation code
- 6.enter your email address which you are currently using (Make sure your email is working if not you will lose your activation because of the fake or non working email)
- 7.After filling the EMail and activation code click Activate and wait for email reply for your password to support area.
- 8.Always read before you login .

Notes :

Please use your primary email address which you have access to, because we will send your password to this email. This email will be the login name to your download support account. We won't entertain the changing of login email address,please enter correct information when activating download account.If you have Any problem on your login account or not recieved email for password contact us at support@ust-pro2.org

www.ust-pro2.org

sales@ust-pro2.org

support@ust-pro2.org

info@vsh-gsm.com